



TMIR6000 with 1/4" kerf cut reveal in walnut

TECTUS[®] Hinges by Simonswerk[®]

As Modern and Contemporary Architecture continues to grow in popularity the demand for sleeker designs and unique door solutions has been growing. One of the most unique applications you can bring to a modern door package is a concealed hinge.

By selecting the Simonswerk[®] Tectus[®] hinge as our standard concealed hinge, we are offering you one of the leading manufacturers of heavy-duty, high-performance hinge systems — producing premium hinge systems for over 125 years.

Our hinge systems provide you with a complete solution:

- Precision-Machined Door,
- Fully Prepped, Ready to Assemble Jamb
- Concealed Hinges*

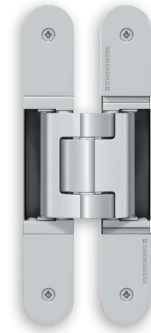
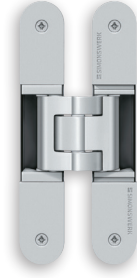
* Concealed hinges are sent direct to a named dealer representative until ready for installation on the job site.

Now available as a standard hinge prep on all 1-3/4" TruStile doors



**Sleek & Modern
Completely Concealed
Easily Adjustable**

Specifications



Tectus TE 340 3D

Tectus TE 540 3D

Load Capacity	80 kg (176 lbs)	120 kg (264 lbs)
Minimum Door Thickness	Minimum 1-3/4"	Minimum 1-3/4"
Length	160.0 mm (6.299")	200.0 mm (7.874")
Width	28.0 mm (1.102")	32.0 mm (1.260")
Opening Angle	180° degree	180° degree
Adjustable	Adjustable in three dimensions: side +/- 3.0 mm (0.118") height +/- 3.0 mm (0.118") compression +/- 1.0 mm (0.039")	Adjustable in three dimensions: side +/- 3.0 mm (0.118") height +/- 3.0 mm (0.118") compression +/- 1.0 mm (0.039")
Maintenance-free slide bearings	Yes	Yes

Finishes

Powder Coated Finishes



107 Matte Deep Black



124 Satin Chrome Look



125 Satin Nickel Look



156 Rustic Umber

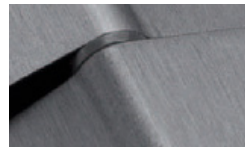
Galvanic Plated Finishes



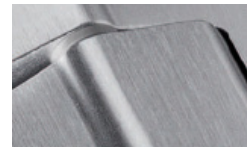
030 Polished Brass



038 Polished Nickel



144 Satin Nickel



146 Satin Chrome

Galvanic/Liquid Coated Finishes



126 Stainless Steel Look